



ALL STATE ETUDES SET 2

Note: Metronome markings below are recommended TARGETS for students, not REQUIREMENTS. Performing at a slower tempo with greater accuracy and expression may result in a higher score.

FLUTE

Romantic Etudes, Opus 66; Kohler, Ernesto ed. Cavally, Robert; Hal Leonard; HL 00970033

*An edition of this book may also be found online via IMSLP

Lyrical/Melodic: #7 "In Moonlight", m. 1-18

Target Metronome: Eighth note=120 bpm



Technical: #24 "Gavotte", m. 1-14.

Target Metronome: Quarter note=60 bpm



In addition to these two etudes, the audition should consist of:

- Ab Major, F minor, Chromatic scales (please see flute scale sheet set 2)
 - Memorization not required for scales
- Sight reading etude (will be available and testable on Opus)
- Excerpt from the All State music (available online in early fall)
- OPTIONAL Piccolo excerpt (for piccolo consideration, available early fall)



ALL STATE ETUDES SET 2

Note: Metronome markings below are recommended TARGETS for students, not REQUIREMENTS. Performing at a slower tempo with greater accuracy and expression may result in a higher score.

OBOE

48 Studies for Oboe or Saxophone, Op. 31; Ferling, Franz ed. Andraud, Albert; Southern, ISBN: 1581060513

*An edition of this book may be also be found online via IMSLP

Lyrical/Melodic: #5, Andante Cantabile, m. 1-16

Target Metronome: Eighth note=76 bpm



Technical: #12, Allegro furioso, m. 1-downbeat of 20

Target Metronome: Quarter note=84 bpm



In addition to these two etudes, the audition should consist of:

- D Major, B minor, Chromatic scales (please see oboe scale sheet set 2)
 - Memorization not required for scales
- Sight reading etude (will be available and testable on Opus)
- Excerpt from the All State music (available online in early fall)



ALL STATE ETUDES SET 2

Note: Metronome markings below are recommended TARGETS for students, not REQUIREMENTS. Performing at a slower tempo with greater accuracy and expression may result in a higher score.

BASSOON

Bassoon Studies for Advanced Players, O. 8, No. 2; Weissenborn, Julius; Carl Fischer Music, ISBN: 0825843863

*An edition of this book may be also be found online via IMSLP

Lyrical/Melodic: #4, Andante Sostenuto. Pickup to M. 12-end.

Target Metronome: Quarter note=66 bpm



Technical: #22, Moderato. M. 1-8, 25-end (as one, no break)

Target Metronome: Dotted Quarter note=88 bpm



In addition to these two etudes, the audition should consist of:

- E Major, C#minor, Chromatic scales (please see bassoon scale sheet set 2)
 - Memorization not required for scales
- Sight reading etude (will be available and testable on Opus)
- Excerpt from the All State music (available online in early fall)



ALL STATE ETUDES SET 2

Note: Metronome markings below are recommended TARGETS for students, not REQUIREMENTS. Performing at a slower tempo with greater accuracy and expression may result in a higher score.

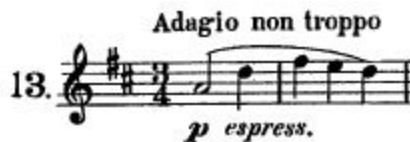
CLARINET

32 Etudes for Clarinet; Rose, Cyrille; Carl Fischer Music, ISBN: 0825807425

*An edition of this book may be also be found online via IMSLP

Lyrical/Melodic: #13, Adagio non Troppo. M. 1-24

Target Metronome: Eighth note=108 bpm



Technical: #9, Moderato Assai. M. 1-downbeat of 19

Target Metronome: Quarter note=106 bpm



In addition to these two etudes, the audition should consist of:

- E Major, C#minor, Chromatic scales (please see clarinet scale sheet set 2)
 - Memorization not required for scales
- Sight reading etude (will be available and testable on Opus)
- Excerpt from the All State music (available online in early fall)
- OPTIONAL Eb Clarinet Excerpt (for Eb part consideration, available online in early fall)



ALL STATE ETUDES SET 2

Note: Metronome markings below are recommended TARGETS for students, not REQUIREMENTS. Performing at a slower tempo with greater accuracy and expression may result in a higher score.

BASS CLARINET

Melodious and Progressive Studies for Clarinet, Book 1; Hite, David; Southern Music, ISBN: 978-1581060508

Lyrical/Melodic: pg. 43, #13, C Major, beat 4 of M. 10-end

Target Metronome: Quarter Note=60 BPM



Technical: pg 31, #2, B Minor, M. 9-end

Target Metronome: Dotted Quarter note=116



In addition to these two etudes, the audition should consist of:

- E Major, C#minor, Chromatic scales (please see clarinet scale sheet set 2)
 - Memorization not required for scales
- Sight reading etude (will be available and testable on Opus)
- Excerpt from the All State music (available online in early fall)
- OPTIONAL Eb Clarinet Excerpt (for Eb part consideration, available online in early fall)



ALL STATE ETUDES SET 2

Note: Metronome markings below are recommended TARGETS for students, not REQUIREMENTS. Performing at a slower tempo with greater accuracy and expression may result in a higher score.

SAXOPHONES

48 Studies for Oboe or Saxophone, Op. 31; Ferling, Franz ed. Andraud, Albert; Southern, ISBN: 1581060513

*An edition of this book may be also be found online via IMSLP

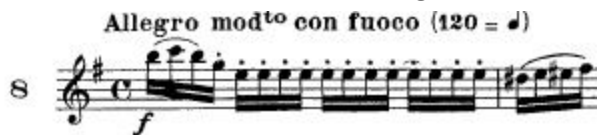
Lyrical/Melodic: #13, Andante con gusto. M. 1-downbeat of 16

Target Metronome: Dotted quarter note=54 bpm



Technical: #8, Allegro con fuoco. M 1-16.

Target Metronome: Quarter note=112 bpm



In addition to these two etudes, the audition should consist of:

- EMajor, C# minor, Chromatic scales (please see sax scale sheet set 2)
 - Memorization not required for scales
- Sight reading etude (will be available and testable on Opus)
- Excerpt from the All State music (available online in early fall)



ALL STATE ETUDES SET 2

Note: Metronome markings below are recommended TARGETS for students, not REQUIREMENTS. Performing at a slower tempo with greater accuracy and expression may result in a higher score.

TRUMPET

Complete Conservatory Method for Trumpet; Arban, Jean-Baptiste; Carl Fischer Music, ISBN: 0825803853

*An edition of this book may be also be found online via IMSLP

Lyrical/Melodic: "Theme" from No. 3 "Fantaisie Brillante" m. 1-24.

Target Metronome: Quarter note=88 bpm



Technical: 14 Characteristic Studies No. 9, Allegro. M. 1- 16 (beat 3)

Target Metronome: Quarter note=88 bpm



In addition to these two etudes, the audition should consist of:

- Ab Major, F minor, Chromatic scales (please see trumpet scale sheet set2)
 - Memorization not required for scales
- Sight reading etude (will be available and testable on Opus)
- Excerpt from the All State music (available online in early fall)



ALL STATE ETUDES SET 2

Note: Metronome markings below are recommended TARGETS for students, not REQUIREMENTS. Performing at a slower tempo with greater accuracy and expression may result in a higher score.

HORN

*Sixty Selected Studies for French Horn; Kopprasch, C; Alfred Publishing, Kalmus Edition;
ISBN: 0769257593*

*IMPORTANT- some editions split this into a volume 1 and 2. You will need BOTH volumes in that case. The Kalmus edition is the complete set in one volume.

*An edition of this book may be also be found online via IMSLP

Lyrical/Melodic: #22, Adagio Espressivo. M. 1-10 (no repeat)

Target Metronome: Eighth note=88 bpm



Technical: #34, Allegro. M. 26-end

Target Metronome: Quarter note=84 bpm



In addition to these two etudes, the audition should consist of:

- G Major, E minor, Chromatic scales (please see horn scale sheet set 2)
 - Memorization not required for scales
- Sight reading etude (will be available and testable on Opus)

- Excerpt from the All State music (available online in early fall)



ALL STATE ETUDES SET 2

Note: Metronome markings below are recommended TARGETS for students, not REQUIREMENTS. Performing at a slower tempo with greater accuracy and expression may result in a higher score.

TROMBONE

Selected Studies for Trombone; Voxman, H; Rubank Publications, ISBN: 9781423445296

Lyrical/Melodic: G Minor, pg. 4. Lento. M. 1-16.

Target Metronome: Quarter note=88 bpm



Technical: D Major, pg. 34. Giocoso. M. 25 to DS, then play through m. 8.

Target Metronome: Quarter note=110 bpm



In addition to these two etudes, the audition should consist of:

- Gb Major, Eb minor, Chromatic scales (please see trombone scale sheet set 2)
 - Memorization not required for scales
- Sight reading etude (will be available and testable on Opus)
- Excerpt from the All State music (available online in early fall)



ALL STATE ETUDES SET 2

Note: Metronome markings below are recommended TARGETS for students, not REQUIREMENTS. Performing at a slower tempo with greater accuracy and expression may result in a higher score.

BASS TROMBONE

Selected Studies for Trombone; Voxman, H; Rubank Publications, ISBN: 9781423445296

70 Studies for Bb Tuba, Vol. 1; Blazhevich, Vladislav; Music For Brass; No. 273

*to display range, one etude from each of the above is used for bass trombone auditions.

Lyrical/Melodic: Blazhevich book- #6, Andante. M. 1-14

Target Metronome: Quarter note=80 bpm



Technical: Voxman book- D Major, pg. 34. Giocoso. M. 25 to DS, then play through m.

8.

Target Metronome: Quarter note=110 bpm



In addition to these two etudes, the audition should consist of:

- Gb Major, Eb minor, Chromatic scales (please see trombone scale sheet set 2)
 - Memorization not required for scales
- Sight reading etude (will be available and testable on Opus)
- Excerpt from the All State music (available online in early fall)



ALL STATE ETUDES SET 2

Note: Metronome markings below are recommended TARGETS for students, not REQUIREMENTS. Performing at a slower tempo with greater accuracy and expression may result in a higher score.

EUPHONIUM

Arban Method for Trombone and Baritone; Arban, Jean-Baptiste, ed. Randall, Charles; Carl Fischer Music; ISBN: 0825802547

*Euphonium TC may find these same etudes in the Arban Trumpet book

Lyrical/Melodic: "Theme" from No. 3 "Fantaisie Brillante" m. 1-24.

Target Metronome: Quarter note=88 bpm



Technical: 14 Characteristic Studies No. 9, Allegro. M. 1- 16 (beat 3)

Target Metronome: Quarter note=88 bpm



In addition to these two etudes, the audition should consist of:

- Gb Major, Eb minor, Chromatic scales (please see Euphonium scale sheet set 2)
 - Memorization not required for scales
- Sight reading etude (will be available and testable on Opus)
- Excerpt from the All State music (available online in early fall)



ALL STATE ETUDES SET 2

Note: Metronome markings below are recommended TARGETS for students, not REQUIREMENTS. Performing at a slower tempo with greater accuracy and expression may result in a higher score.

TUBA

70 Studies for Bb Tuba, Vol. 1; Blazhevich, Vladislav; Music For Brass; No. 273

*An edition of this book may be also be found online via IMSLP

Lyrical/Melodic: #9, Andante Cantabile. M. 1-downbeat of 19.

Target Metronome: Quarter note=72 bpm



Technical: #18, Allegro. M. 1-downbeat of 13

Target Metronome: Quarter note=92 bpm



In addition to these two etudes, the audition should consist of:

- Gb Major, Eb minor, Chromatic scales (please see tuba scale sheet set 2)
 - Memorization not required for scales
- Sight reading etude (will be available and testable on Opus)
- Excerpt from the All State music (available online in early fall)



ALL STATE ETUDES SET 2

Note: Metronome markings below are recommended TARGETS for students, not REQUIREMENTS. Performing at a slower tempo with greater accuracy and expression may result in a higher score.

PERCUSSION

Please note that all students must complete ALL parts of the audition. Percussionists are expected to be well rounded players capable of performing any part the music calls for.

Timpani:

Fundamental Method for Timpani; Peters, Mitchell; Alfred Publishing; ISBN: 073902051X

Selected Etude: #57, pg. 193. Full Etude.

Target Metronome: Quarter note=104 bpm



Snare Drum:

Advanced Snare Drum Studies; Peters, Mitchell; Try Publishing Company; ISBN: 9781934638149

Selected Etude: #5, pg. 10-11. Full Etude.

Target Metronome: Quarter note=160 bpm



Mallets:

Modern School for Xylophone; Goldenberg, Morris; Warner Bros. Publications;

ISBN: 978-0757908903

*if possible, please use a Marimba for this etude. 2nd choice would be a Xylophone.

Selected Etude: #XXI, pg 79. Full Etude.

Target Metronome: Quarter note=80 bpm



In addition to these three etudes, the audition will contain an excerpt from the all state music on one or more auxiliary percussion instruments (cymbals, tambourine, etc.). This excerpt will be available online in early Fall.