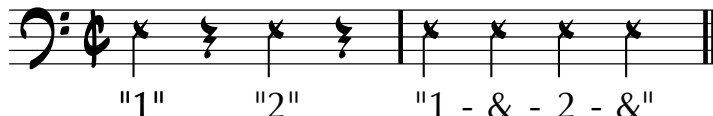


NMEA All State Jazz Audition ETUDE A2-FUNK

*This etude is for the exclusive, internal use of The Nebraska Music Educators Association
Mr. Roger Groth and Dr. Evan Lee, Project Co-ordinators*

FUNK (Straight 8ths) : M.M. ♩ = 100

COUNTOFF:



ETUDE

SLAP/POP Strings ad lib



NMEA All State Jazz Audition Etude A2 - FUNK - ELECTRIC Bass

IMPROVISE 2 Choruses

C¹³



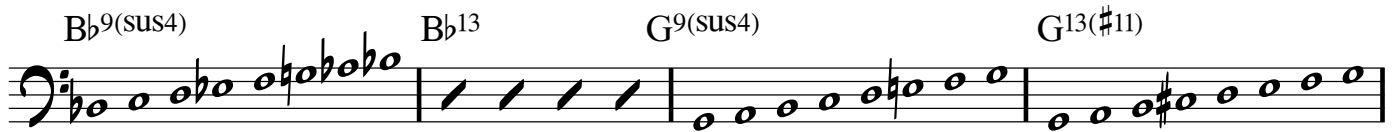
A^{b13}



C¹³



B^{b9(sus4)} B^{b13} G^{9(sus4)} G^{13(#11)}

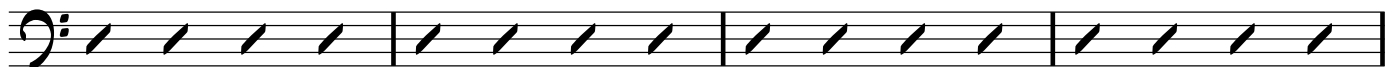


F¹³



COMP/Groove

C¹³



3 **NMEA All State Jazz Audition Etude A2 - FUNK** - ELECTRIC Bass

A \flat 13



A musical staff with a bass clef and a key signature of one flat. It contains four measures of rhythmic notation, each represented by four diagonal slashes. The staff is divided into four equal measures by vertical bar lines.

C13



A musical staff with a bass clef and a key signature of one flat. It contains four measures of rhythmic notation, each represented by four diagonal slashes. The staff is divided into four equal measures by vertical bar lines.

B \flat 9(sus4)

B \flat 13

G9(sus4)

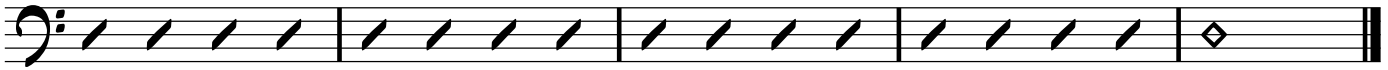
G13(#11)



A musical staff with a bass clef and a key signature of one flat. It contains four measures of rhythmic notation, each represented by four diagonal slashes. The staff is divided into four equal measures by vertical bar lines.

F13

C13(#11)



A musical staff with a bass clef and a key signature of one flat. It contains five measures of rhythmic notation. The first four measures each have four diagonal slashes, and the fifth measure has a diamond symbol. The staff is divided into five equal measures by vertical bar lines.